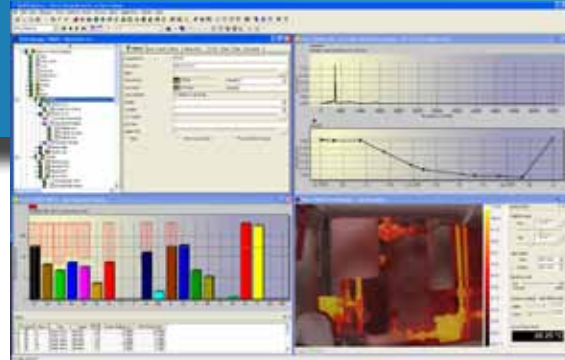


# MAINTelligence™ Options



## Infrared Thermography Module - Fluke Ti Series



### Feature Summary

- Import infrared and visible light images from infrared cameras directly into MAINTelligence.
- Manage thermographic data the same as other PdM data in MAINTelligence.
- Share thermographic images throughout the organization without the camera's software.
- Integrate thermographic data and findings with information from vibration, oil analysis, ultrasonic and asset basic care programs.
- The infrared thermography module allows the operator to display the thermographic images with a full range of features such as multiple palettes, visible light/thermographic, image blending, temperature histogram and more.

Created with ease of use in mind, the infrared thermography module makes identification, analysis and reporting of a wide range of thermal anomalies quick and effortless. Infrared thermography can be used in electrical, mechanical, and structural applications to help extend asset availability and performance.

The infrared thermography module makes correlating infrared data with other technologies easy and effective, allowing users to easily generate customized, professional reports.

Working in combination with the latest version of InspectCE, infrared analysts can automate the infrared data collection process. Enter notes, make voice recordings or other information needed for corrective maintenance work orders into the InspectCE handheld, and link this information to a thermographic image collected in one of the supported cameras. This enables the operator to automatically link the thermographic image to the correct asset when uploading inspection points.

Image import and linking capability also works for digital cameras, digital voice recorders and other devices that save data in a digital file format.

# Fluke Ti32 Specifications



**Detector Type:** 320 X 240 Focal Plane Array, un-cooled microbolometer

**Visual Camera:** 640x480, full color

**Temperature Range:** -20 °C to +600 °C  
(-4 °F to +1112 °F)

**Accuracy:**  $\pm 2^{\circ}\text{C}$  or 2% whichever is greater

**Thermal field of view:** 23° horizontal x 17° vertical

**Minimum focus distance:** 46 cm (approx. 18 in)

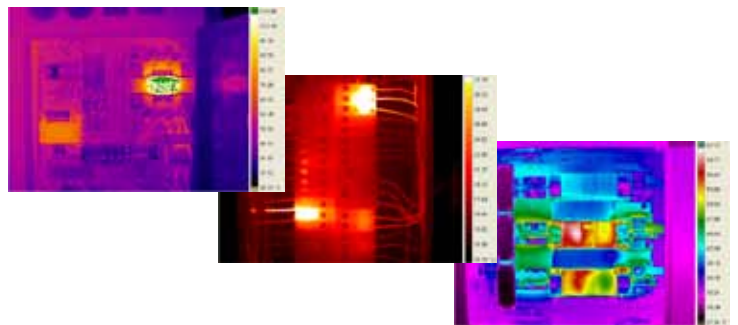
**Thermal sensitivity (NETD):**  $\leq 0.045$  degrees C and 45 mK

**Power:** Two lithium ion rechargeable smart battery packs with five-segment LED display to show charge level, Four+ hours continuous use per battery pack (assumes 50 % brightness of LCD)

**On-screen emissivity correction:** Yes

**Measurement modes:** Center point and hot and cold markers

**Minimum span (auto / manual):** 5°C/2.5°C



Design Maintenance Systems Inc.  
38 Fell Avenue, Suite 201  
North Vancouver, BC,  
Canada V7P 3S2

Toll Free 1.800.923-3674  
Tel 1.604.984-3674  
[www.desmaint.com](http://www.desmaint.com)